

10B/85 Mt Derrimut Road Deer Park VIC

***** IDEAL OFFICE / SHOWROOM / MEDICAL / ALLIED HEALTH / RETAIL / TRAINING CENTRE & MORE *****

Positioned in a Quality Development adjoining Major retailers such as Caltex Service station, opposite McDonalds and Derrimut Village Shopping centre.

Moments to Deer Park Station.

Other features Include :

- Substantial Ground Floor - 337m2 approx
- Huge First Floor Mezzanine - 348m2 approx
- Total Building Area - 685m2
- Recently Installed commercial ducted heating and cooling.

[For full version visit the website](https://www.douglaskay.com.au)

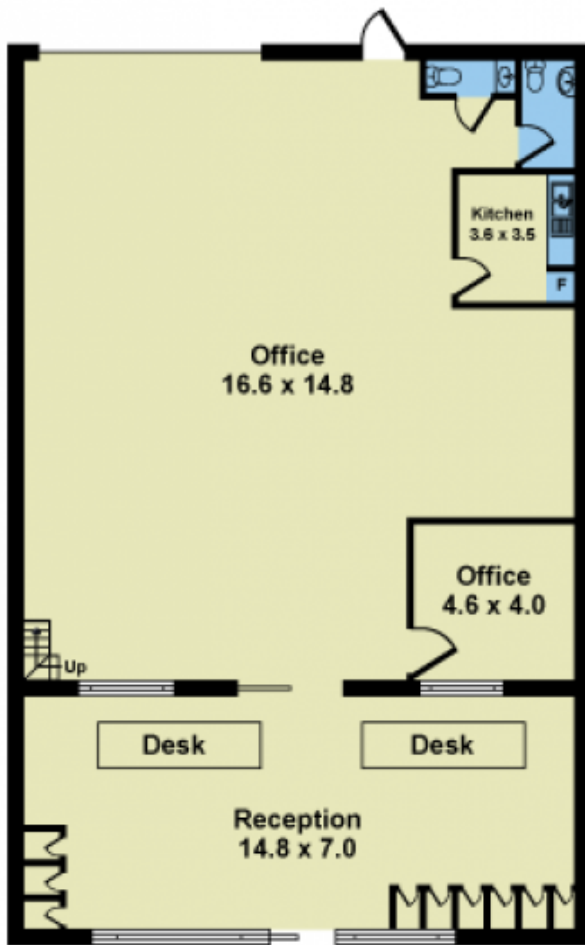
Type : Offices
Price : CONTACT AGENT
Building Size : 685 sqm
View : <https://www.douglaskay.com.au/lease/vic/west/deer-park/commercial/offices/8390051>



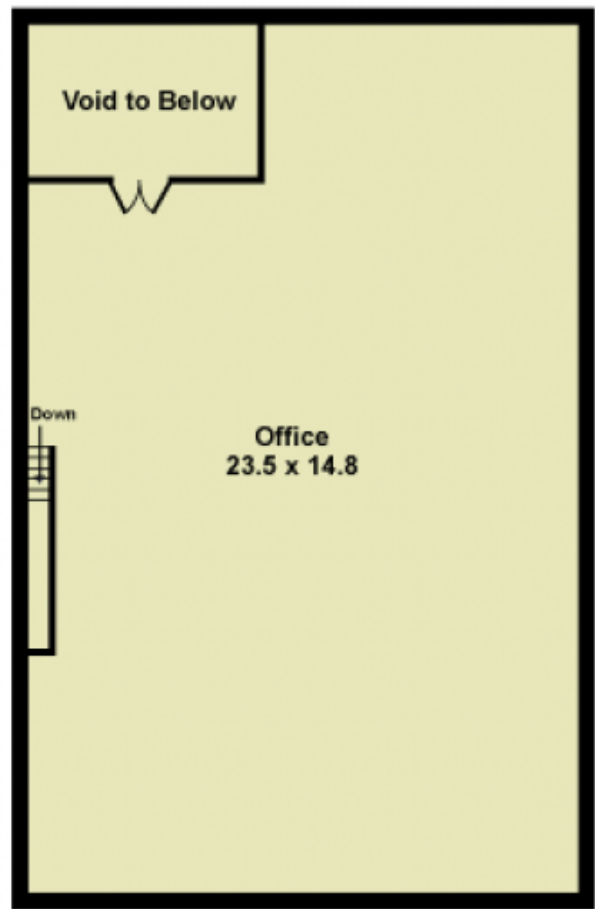
Peter Kay
03 9313 7888



Nick Christopoulos
03 9313 7888



GROUND FLOOR



FIRST FLOOR

Whilst every attempt has been made to ensure the accuracy of this floorplan, measurements of doors, windows, rooms and any other items are approximates only. The producer or agent cannot be held responsible for any errors, omissions or misstatements. This plan is for illustrative purposes only and should be used as such.