

**6x Approved Architectural Plans & Working Drawings**



**3 Pennell Avenue St Albans VIC**

3 🏠 1 🚗 2 🚗

A truly unique opportunity on a sensational park corner allotment, with permits and engineering plans ready to build 6 exceptional townhomes, designed by the renowned inner-city architecture firm Cornetta Partners of Brunswick East.

**Type** : House  
**Price** : 6 x APPROVED\_ \$1,000,000 - \$1,100,000  
**Land Size** : 744 sqm  
**View** : <https://www.douglaskay.com.au/sale/vic/west/st-albans/residential/house/8310641>

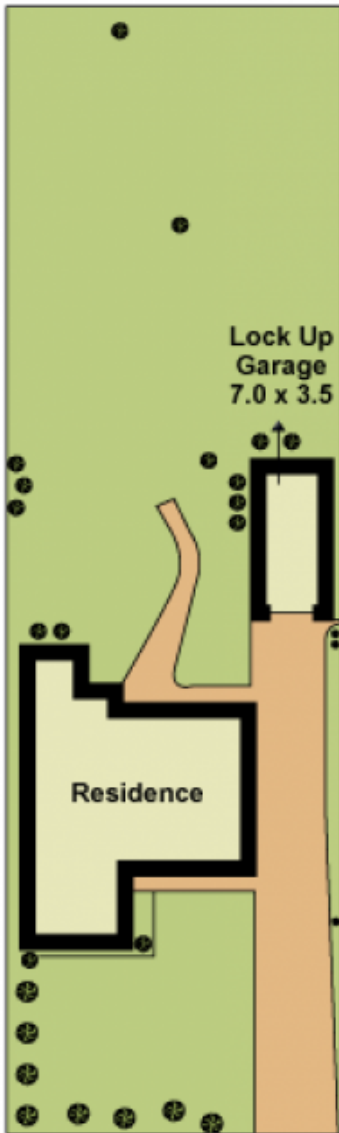
Step straight into your next project without the hassle of dealing with Council, and expect excellent resale potential in this prime location, thanks to a forward-thinking design by a top-tier group.

This development will be one of a kind for this highly convenient location, bringing inner-city style to the West, with picturesque parkland views from the front door and balconies.

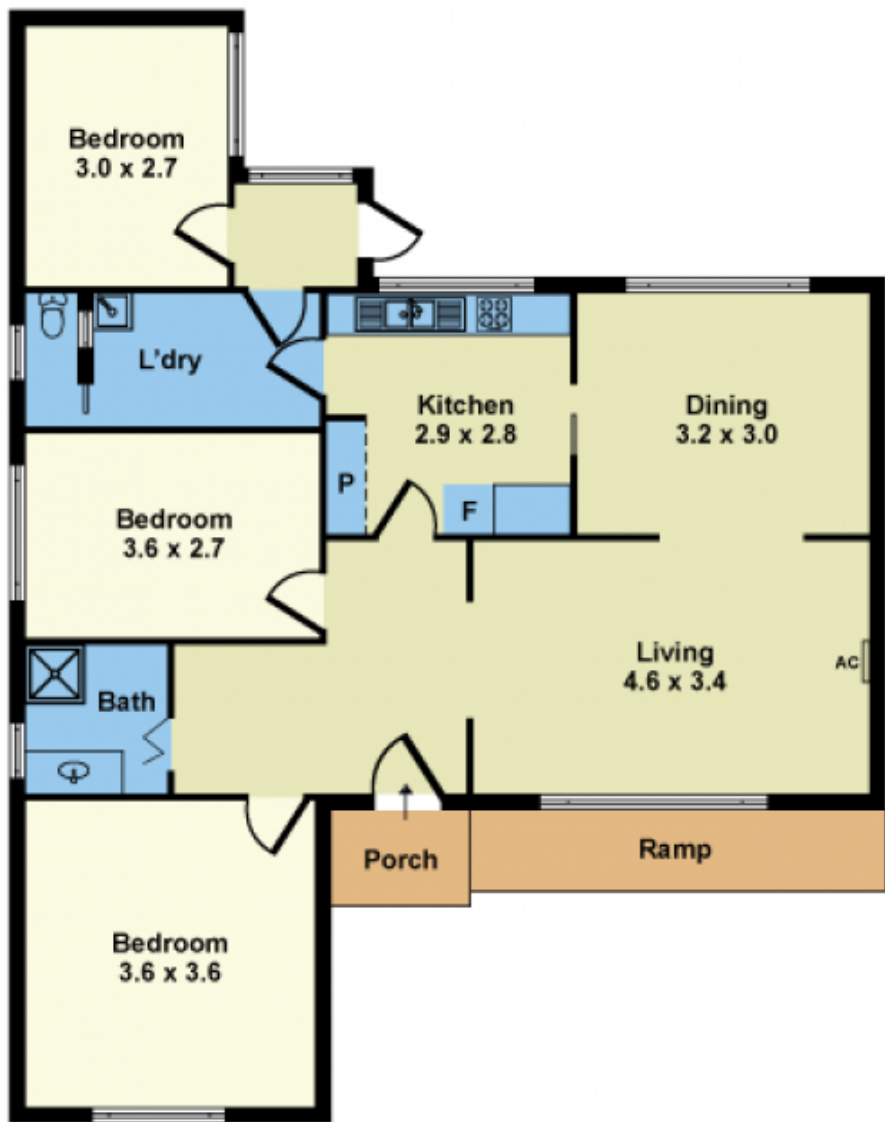


**Peter Kay**  
03 9313 7888

[For full version visit the website](https://www.douglaskay.com.au)



SITE PLAN



FLOOR PLAN

Whilst every attempt has been made to ensure the accuracy of this floorplan, measurements of doors, windows, rooms and any other items are approximates only. The producer or agent cannot be held responsible for any errors, omissions or misstatements. This plan is for illustrative purposes only and should be used as such.