

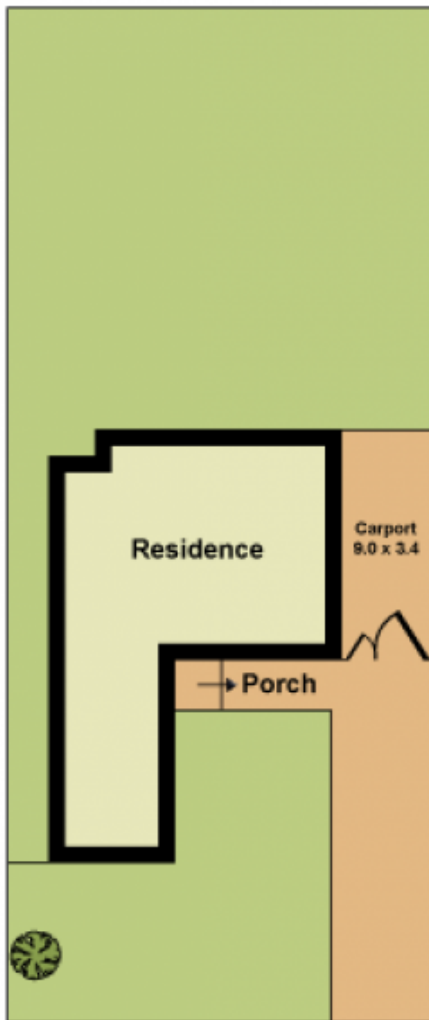
**64 Bardsley Street Sunshine West VIC**

4  2  2 

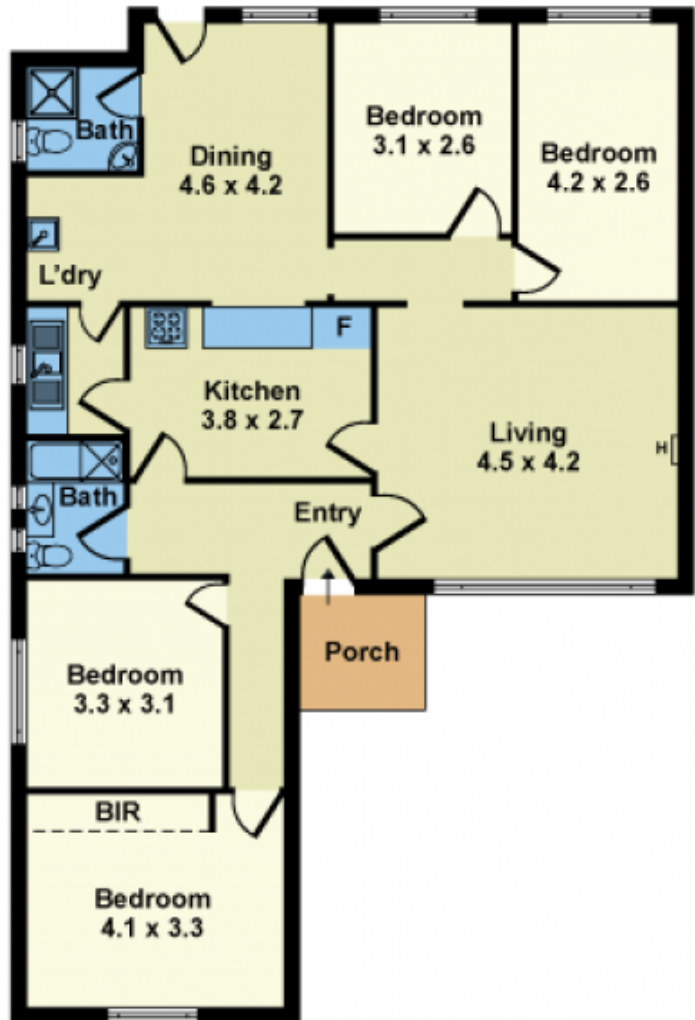
Perfectly positioned for a family, walking distance to Glengala Village, picturesque Kororoit Creek, Sunshine Bus and Train Station with Sunshine cosmopolitan restaurants also in area. A few schools like Sunshine Heights Primary, St Peters/ St Teresa/ Glengala Primary schools within 1 km radius. This weatherboard home with substantial north-facing backyard and wide driveway is in a prime location in Sunshine West.

Built in 1960s, this house sits in the middle of huge gardens and offers 4 bedrooms, 2 bathrooms, one with bath, open lounge, kitchen in two sections and sunroom. Floorboards and reverse cycle unit.

**Type** : House  
**Land Size** : 611 sqm  
**View** : <https://www.douglaskay.com.au/lease/vic/west/sunshine-west/residential/house/7999256>



SITE PLAN



FLOOR PLAN

Whilst every attempt has been made to ensure the accuracy of this floorplan, measurements of doors, windows, rooms and any other items are approximates only. The producer or agent cannot be held responsible for any errors, omissions or misstatements. This plan is for illustrative purposes only and should be used as such.