



20 Hertford Road Sunshine VIC

- _ Total building area - 345m2 (approx).
- _ Ideal for corporate offices, medical centre, training centre etc.
- _ Gated complex with ample on site parking.
- _ Central Sunshine.
- _ Opposite rear of Sunshine Plaza.
- _ Activity Zoned.

** Please Note majority of onsite parking comes with property **

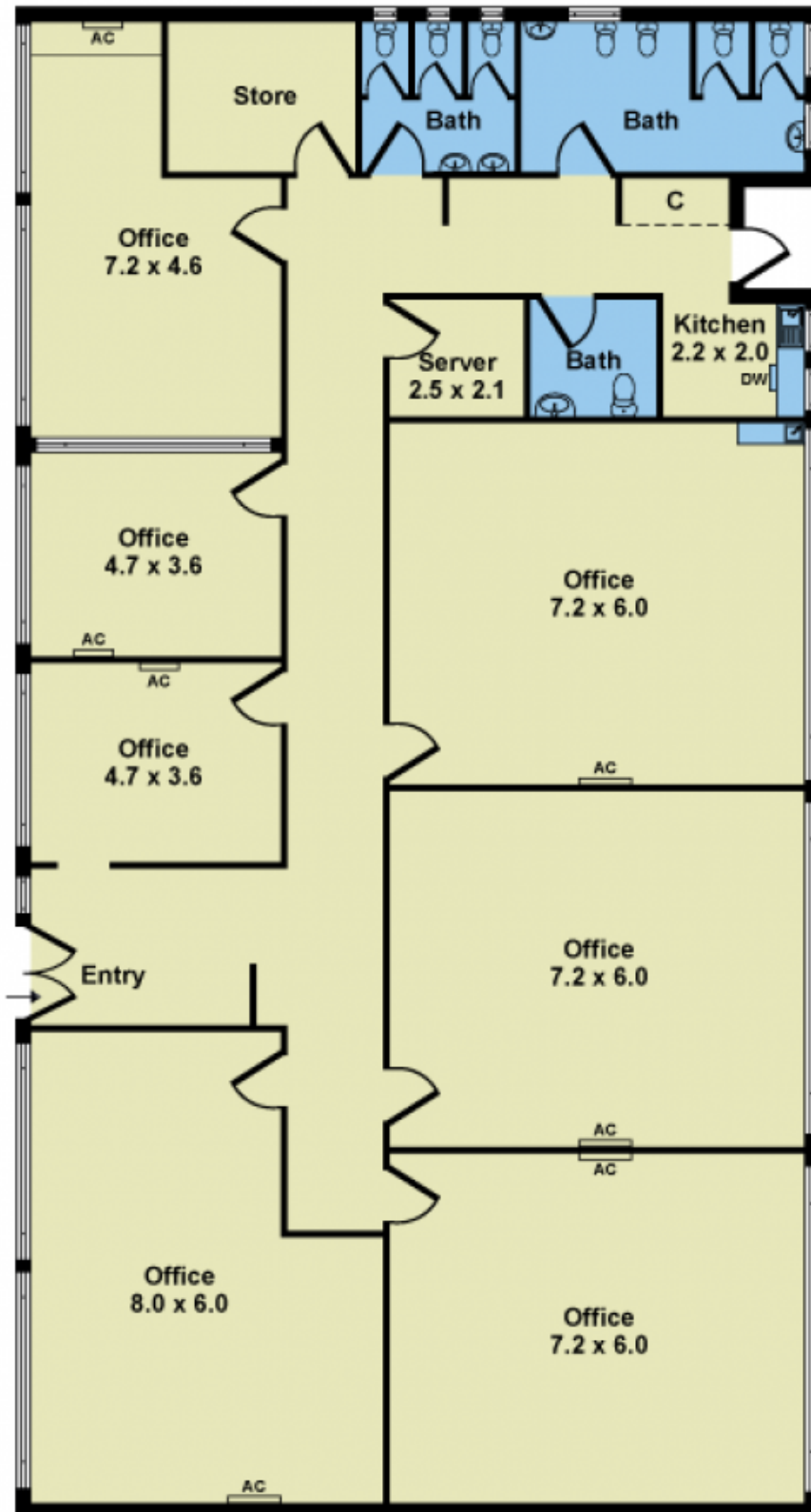
Building Size : 345 sqm
View : <https://www.douglaskay.com.au/lease/vic/west/sunshine/commercial/offices/7228125>



Nick Christopoulos
03 9313 7888



Chinh Pham
03 9313 7888



Whilst every attempt has been made to ensure the accuracy of this floorplan, measurements of doors, windows, rooms and any other items are approximates only. The producer or agent cannot be held responsible for any errors, omissions or misstatements. This plan is for illustrative purposes only and should be used as such.